



DV-PAL Conversion to Square Pixels

Copyright and Terms of Use

Please leave all references to "FridgeMonsters" intact in the documentation and code examples.

1. Except as otherwise provided, the contents of these notes shall not be reproduced, republished, uploaded, posted, transmitted or distributed electronically or non-electronically in any way, without FridgeMonsters LLP prior written permission.
2. Modification of any of the contents or use of the contents for any other purpose will be a violation of FridgeMonsters LLP copyright and other intellectual property rights. Graphics and images in these notes are protected by copyright and may not be reproduced or appropriated in any manner without written permission of FridgeMonsters LLP.
3. FridgeMonsters LLP reserves all rights to deny or restrict access to these notes to any particular person or persons, or to block access from a particular Internet address to the FridgeMonsters.com Web Site, at any time, without ascribing any reasons whatsoever.
4. These Terms of Use shall be governed and construed in accordance with laws of the Republic of Singapore.

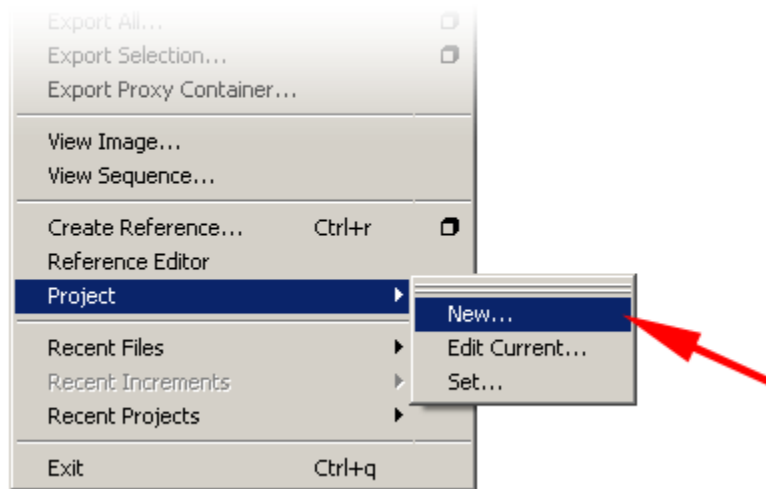
For full details, please view the Terms of Use document at :

<http://www.FridgeMonsters.com/administration/terms.asp>

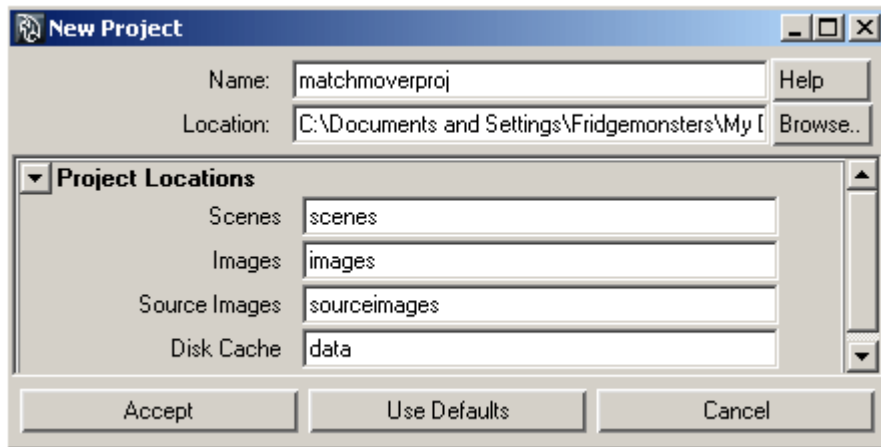
5. Please report any errors in this tutorial to errata@FridgeMonsters.com

Setting the Project

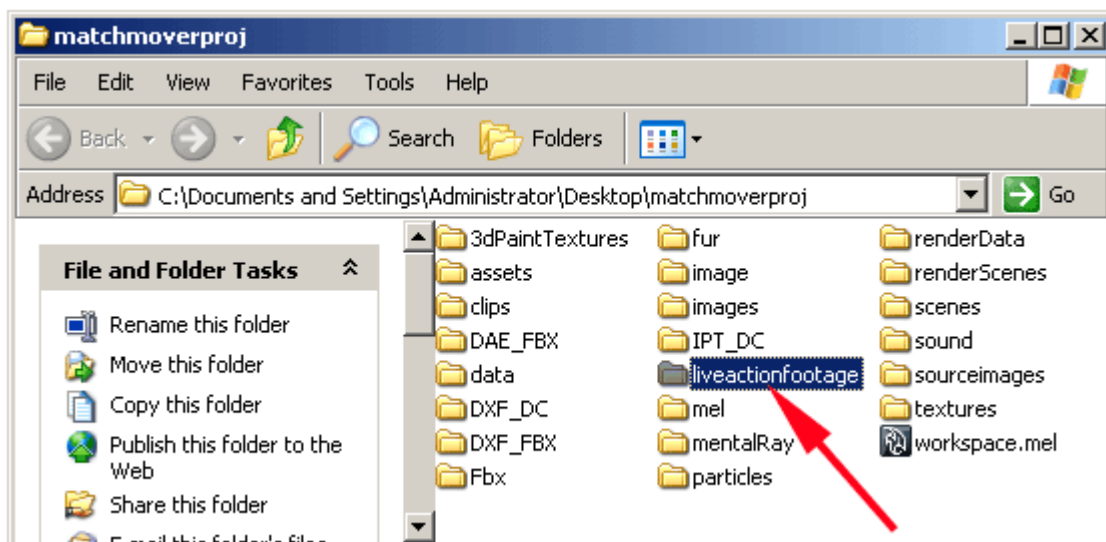
Launch MAYA and create a New Project. Name your project : **matchmoverproj**



Click the **Use Defaults** button to set the Project Data Locations. Then click **Accept**.



Exit MAYA. During this tutorial you will convert a DV-PAL video to a sequence of JPEG images. Create a new folder in the **matchmoverproj** folder called **liveactionfootage**.

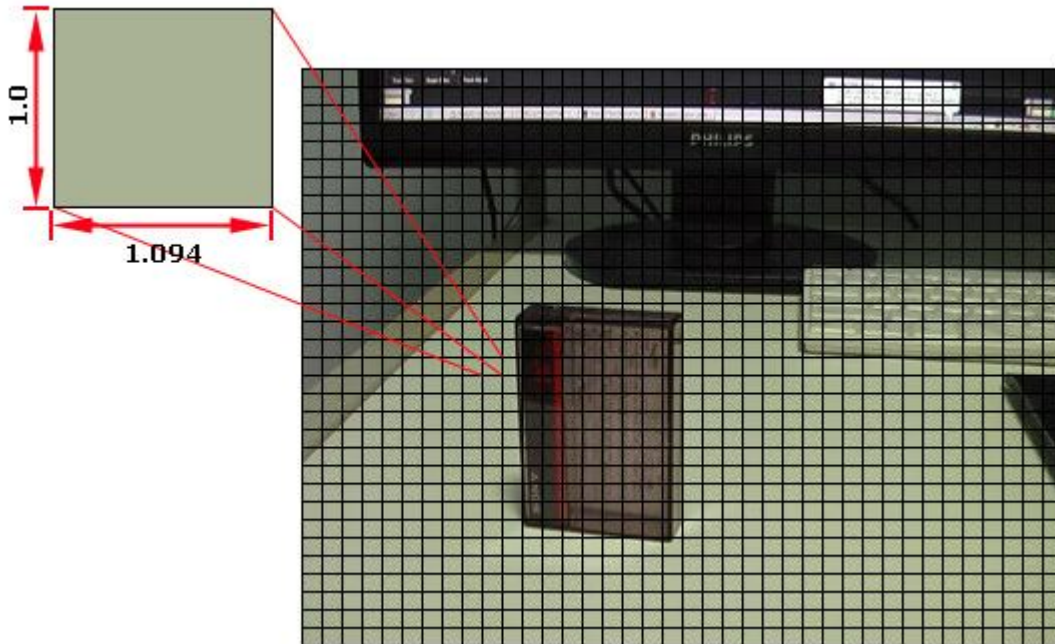


Introduction

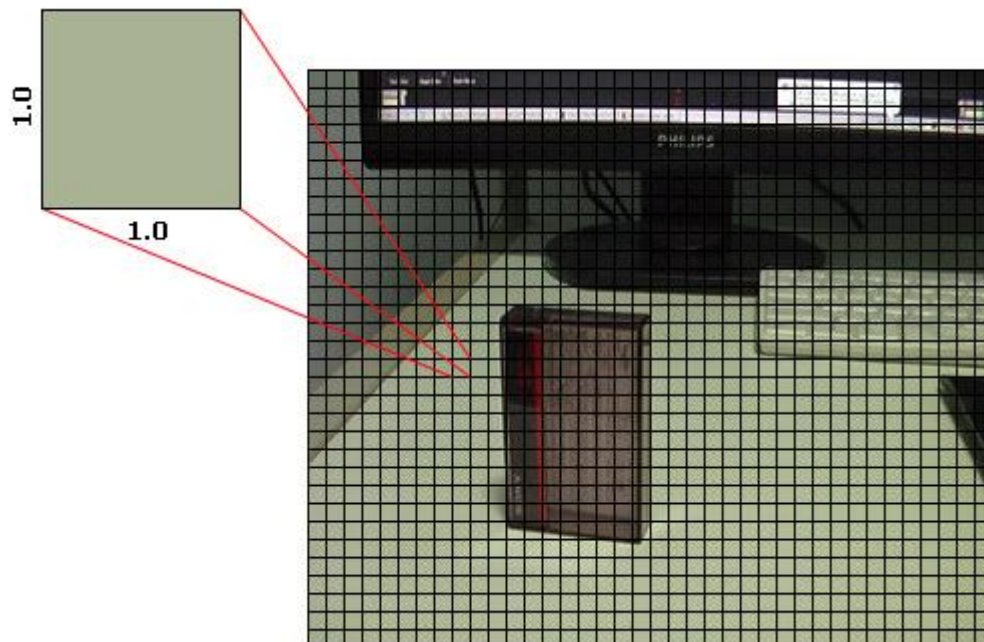
This tutorial explains how to prepare a **DV-PAL** video using **Adobe AfterEffects** for use with **Autodesk MatchMover**.

Pixels on a computer monitor are square. They are the same width and height and can be described as having a pixel aspect ratio of 1:1.

DV-PAL video has 720x576 pixels. However, these pixels are not square. Instead of having an aspect ratio of 1:1 (same width as height) the pixels have an aspect ratio is 128:117, or about 1.094:1.



Consequently, when you display DV-PAL footage on a computer monitor it appears to be squashed. This tutorial explains how to un-squash DV-PAL video.



Tutorial

The first thing to understand is the numbers.

As you can see on the previous page, DV-PAL video is recorded with pixels that are wider than computer monitor pixels. Therefore, the DV-PAL video needs to be stretched, to be displayed correctly on a computer monitor.

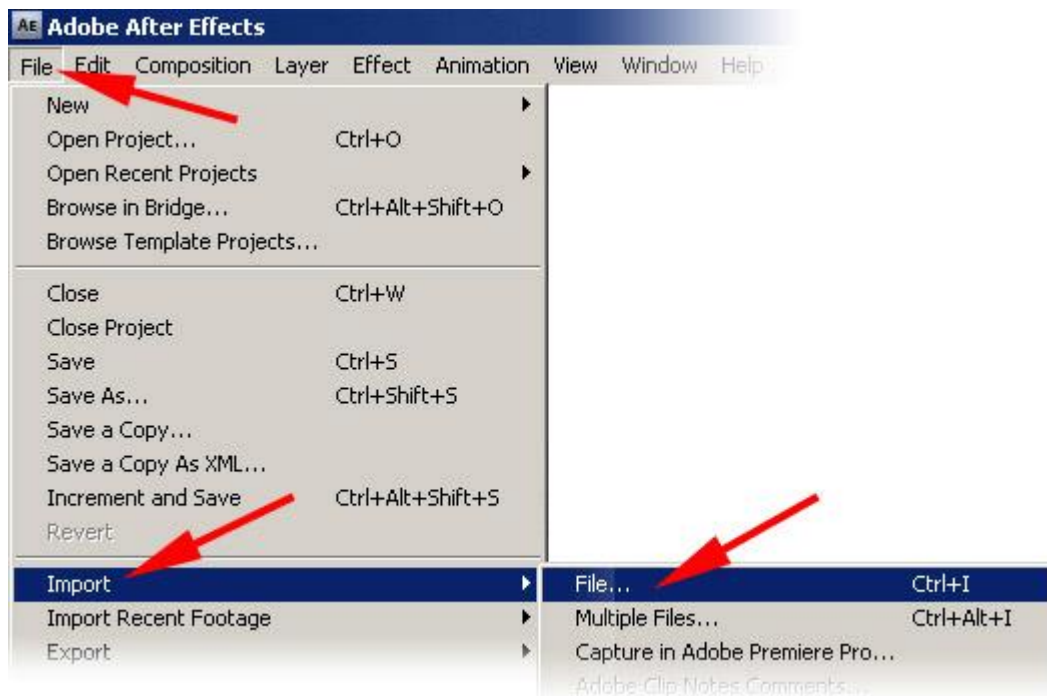
1.094017 * 720 = 787.68 (788 rounded up)

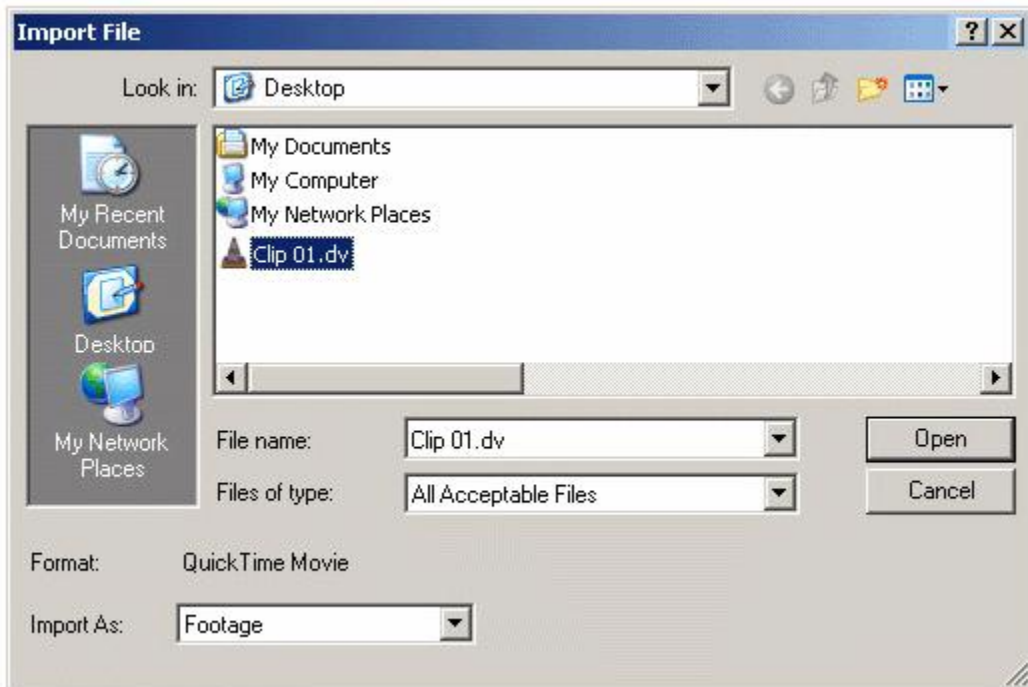
DV-PAL video at 720x576 pixels is equivalent to square pixel video at **788x576**.

If you video record a square with your DV-PAL camera, and export the result as 788x576 to a computer monitor, the square remains square.

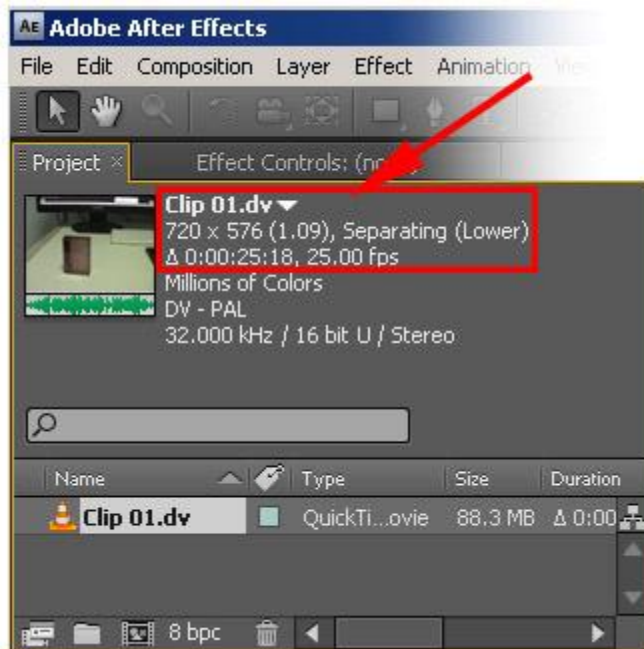
Launch **Adobe AfterEffects** and **Import** your .dv footage.

File > Import > File



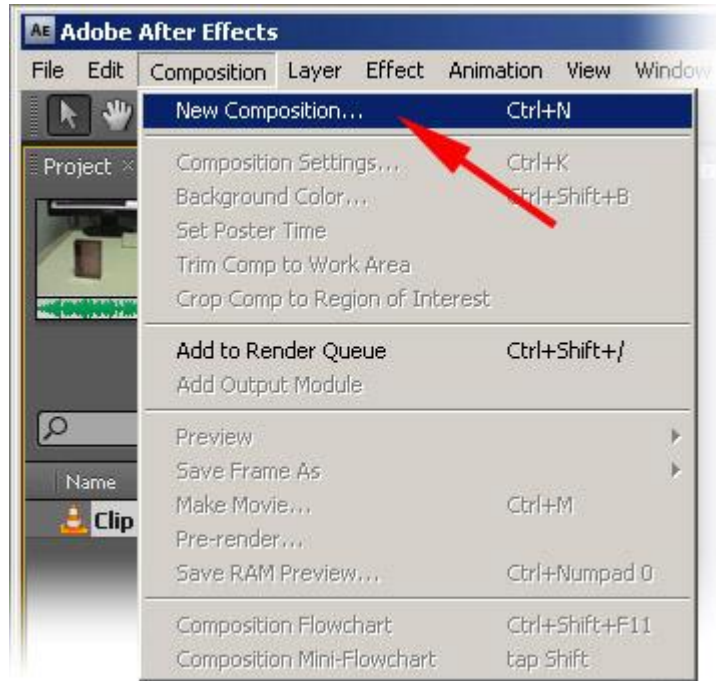


Your footage will be loaded into the **Project** tab. Notice the resolution (720 * 576), the Pixel Aspect Ratio (1.094) and Duration (25 seconds 18 frames in the example below)

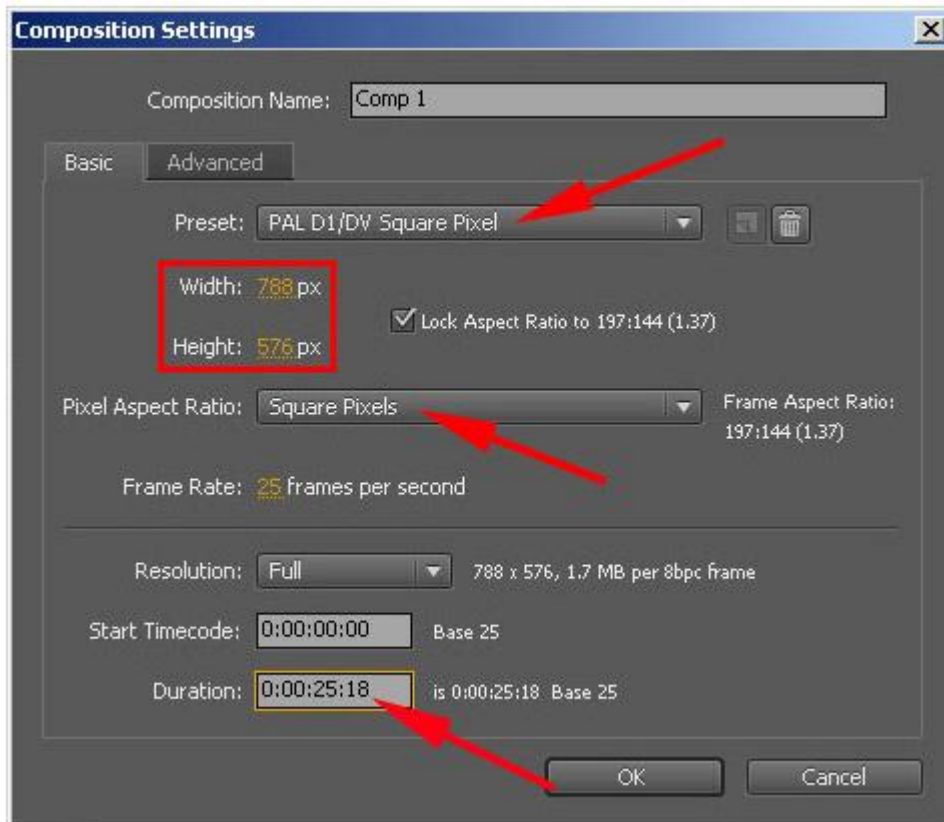


Create a **New Composition**.

Composition > New Composition

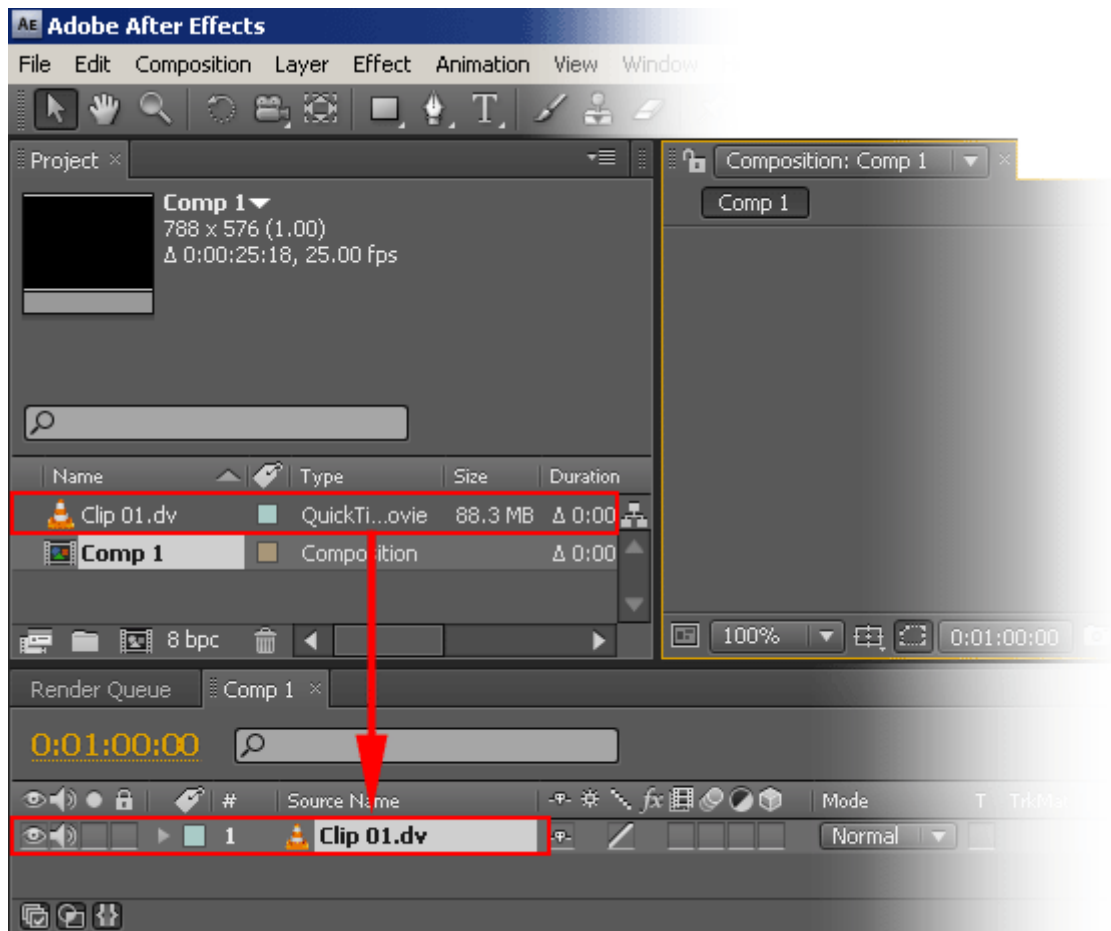


In the **Composition Setting** dialogue window, change the values as indicated in the diagram below.



Check the new Composition (Comp 1) has the correct resolution (788 * 576), duration and frame rate.

Drag the video (**Clip 01.dv**) from the Project window into the **Comp 1 timeline** at the bottom of the screen.

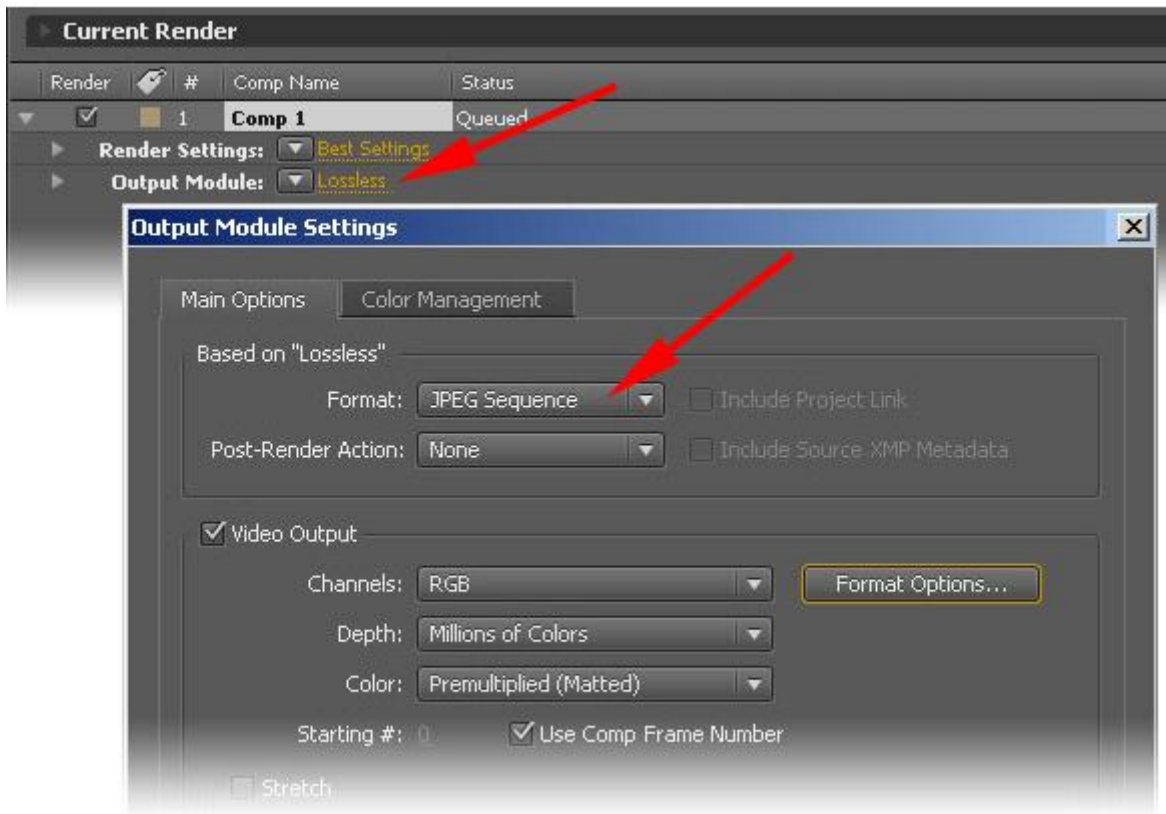


Add Composition (Clip 01) to the **Render Queue**.

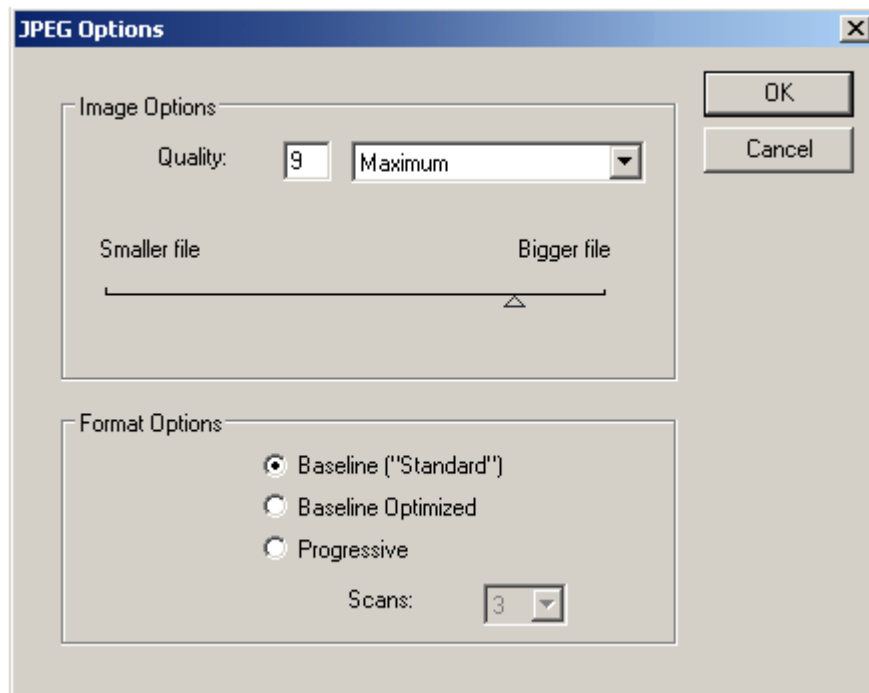
Composition > Add to Render Queue



Edit the **Output Settings** to a **JPEG Sequence** as indicated in the diagram below.



Check the **Format Options** are not set lower than **Maximum**.



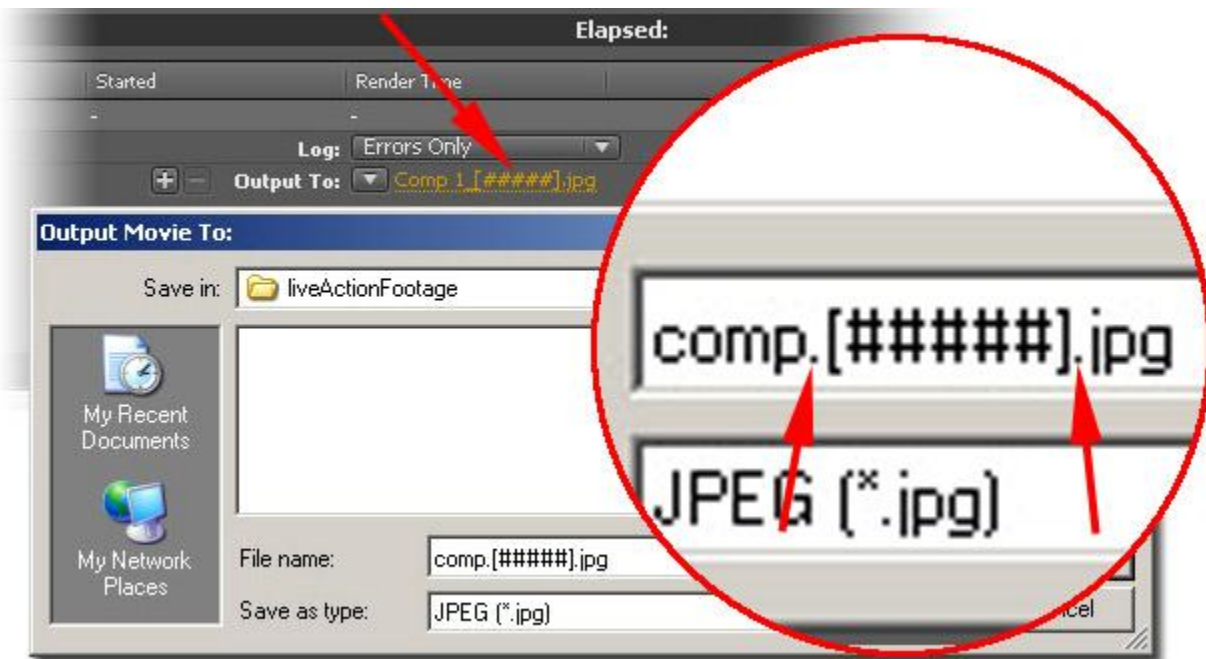
Saving the JPEG Sequence

Edit the **Output To** settings to the appropriate path. For good house-keeping reasons, it is suggested you save the output sequence of JPEGs inside **liveactionfootage folder** created at the start of this tutorial. This will keep your MatchMoved frames and scene files together.

Naming the Files

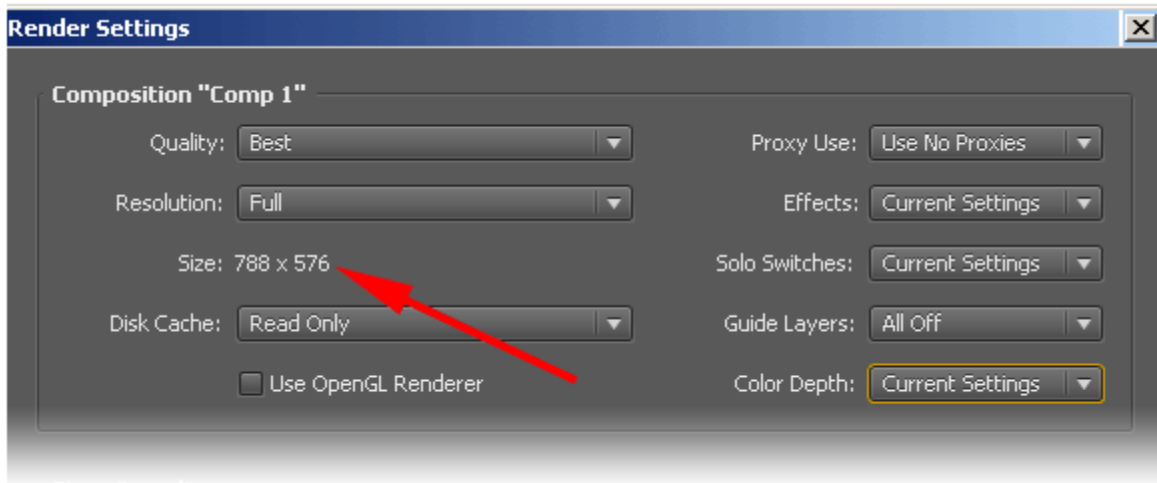
A good trick here is to name the JPEG sequence *filename.frameNumber.jpg*
The important part here is the **dot between the filename and frame number**.

Eventually, when you have MatchMoved your JPEG Sequence, you will export a MAYA scene (.ma/.mb). The MAYA scene will contain a camera, several locators and an **Image Plane**. The Image Plane will contain the first frame of your JPEG Sequence. By placing a **dot between the filename and frame number**, MAYA will automatically play the JPEG Sequence on the Image Plane as a movie.

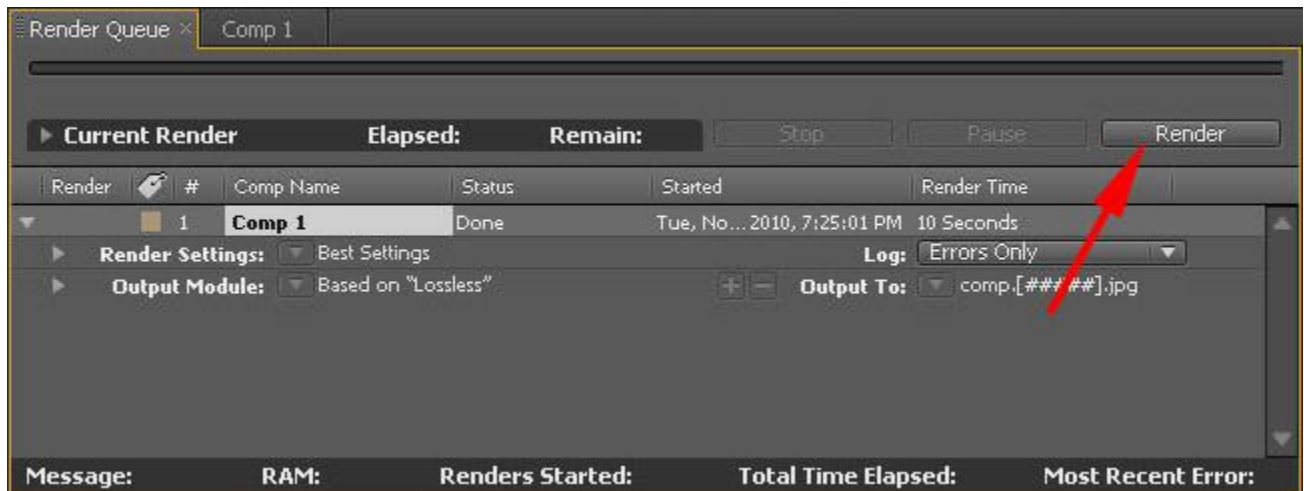


Note : MAYA will play a sequence of files named *filename.frameNumber.jpg* as a movie.

Double check the **Size** (788 * 576) in the **Render Settings**.



Click the **Render** button.



When the Render progress bar has finished you will have a JPEG sequence of frames ready to import into **AutoDesk MatchMover**.

